

Personalized Content, Data & Insights to Measure Future-Ready Skills & Academic Content

Today's students need more than content knowledge to thrive in the innovation economy. Your Portrait of a Graduate defines the skills and competencies that students need to develop in order to be successful in school, work, and life. Project-based learning (PBL) provides students with the opportunity to build and practice those skills, including creative and critical thinking, problem-solving, collaboration, and leadership. With **Defined Goals**, educators have high-quality PBL content aligned to your district's Portrait of a Graduate goals and tools to measure and monitor growth toward those goals.

Defined Goals enhances Defined Learning and Defined Careers by providing customized implementation, measurement, and reporting that captures progress in competencies traditional assessments cannot measure. Through authentic, career-connected experiences, Defined Goals demonstrates how students develop and apply deeper learning competencies, offering unique insights into skills like critical thinking, collaboration, communication, and many more.

HOW DOES IT WORK?

1. Determine Outcomes & Metrics:

Through a consultative process, we'll discuss the goals and content areas you want to measure. These could include a Portrait or Profile of a Graduate, a Career and Academic Plan, 4Cs/5Cs, Global Competencies, Workforce or Career Ready Frameworks, or any other initiative. Need help developing your Portrait of a Graduate? Our comprehensive 12-month Defined Goals - Portrait of a Graduate Package guides you through the entire process - from engaging stakeholders and forming a steering committee to defining key competencies that prepare students for college, career, and life. Our expert-guided approach ensures your vision becomes an actionable framework unique to your district's needs.

Once your framework is established, we'll collaborate to select projects from Defined's award-winning platforms that align with and support your goals.

2. Customize Catalogs & Align to Goals:

The Defined team works with you to create a catalog of selected projects that align with your scope and sequence. We then customize the rubrics to match your specific goals and the competencies you wish to build and measure. Language and tags specific to your district are added to the rubrics for effective scoring and reporting.

3. Access On-Demand Reporting

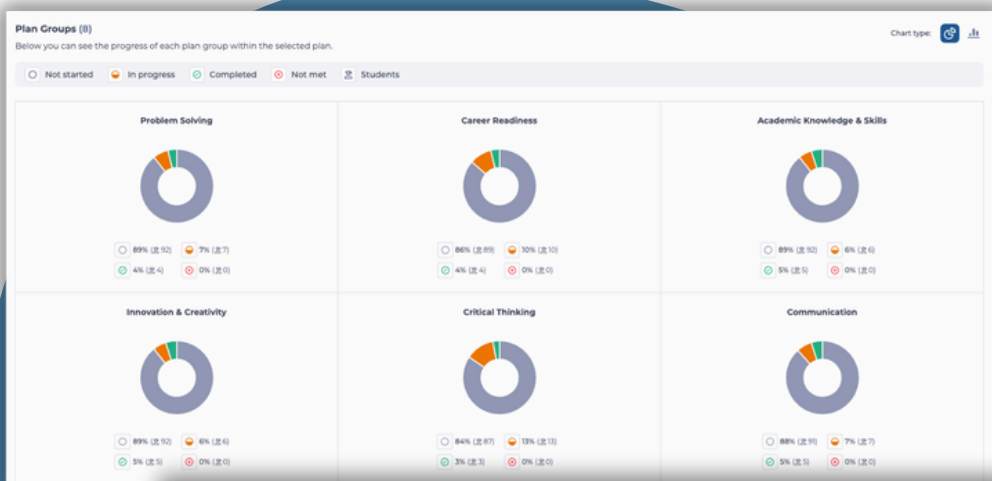
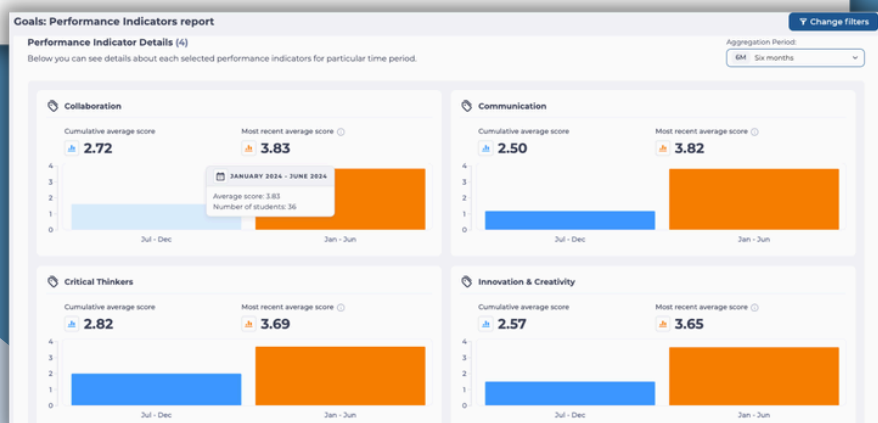
Get immediate insights through our comprehensive reporting. The Defined Goals reports provide real-time data that can be filtered to track progress and measure growth toward your specific Portrait of a Graduate or other initiatives. Access the data you need, when you need it, to inform instruction and monitor student development. Dive deeper into our reports on the next page!



Performance Indicators Report

- Measures student progress in your selected competencies through rubric-based assessment
- Tracks development of skills like communication, collaboration, and critical thinking
- Demonstrates progress over time in Portrait of a Graduate or other competencies through evidence of student performance in authentic contexts

Graphic Representation Multiplier: x1	Graphic representation is not appropriate based on the type of data collected.	Graphic representation is appropriate based on the type of data collected and contains some required labels/elements.	Graphic representation is appropriate based on the type of data collected and contains most required labels/elements.	Graphic representation is neat, appropriate based on the type of data collected, and contains all required labels/elements.
Graph Details Multiplier: x1	Graph is constructed in a way that makes the data difficult to read or interpret.	Graph is somewhat constructed using appropriate scale, labels and title.	Graph is adequately constructed using appropriate scale, labels and title, and is relatively easy to read and analyze the displayed data.	Graph is thoroughly constructed using appropriate scale, labels and title, and is easy to read and analyze the displayed data.
Explanation of Data Multiplier: x1	An incomplete explanation of the associations and trends in the data is included.	An moderately accurate explanation of the associations and trends in the data is included.	An adequate explanation of the associations and trends in the data is included and is relatively easy to understand.	A thorough explanation of the associations and trends in the data is included and is easy to understand.
Critical Thinking Multiplier: x1	The student can utilize critical thinking skills with some support from the teacher. Their analysis of information could be deeper and they may struggle to evaluate evidence, or draw meaningful conclusions. They may need help in developing an organized understanding of concepts.	The student demonstrates emerging critical thinking skills by attempting to evaluate and interpret evidence from different sources. They make attempts to analyze information, evaluate evidence, and draw conclusions that may not be completely accurate. Their reasoning might not be completely organized and as such their understanding of complex concepts may be limited.	The student consistently demonstrates the ability to critically think. They analyze information thoughtfully, evaluating evidence, and drawing appropriate conclusions. Their reasoning is generally well-organized and displays a good understanding of complex concepts. They can apply critical thinking skills to different situations.	The student consistently demonstrates exceptional critical thinking skills analyzing information with depth and precision. They show a strong ability to evaluate evidence and draw insightful conclusions. Their reasoning is well-developed and demonstrates a clear understanding of complex concepts. They can effectively apply their critical thinking skills across various contexts with consideration for multiple viewpoints.



Plans Report

- Monitors self-reported student progress toward customized learning goals
- Supports implementation of frameworks like a Portrait of a Graduate
- Tracks completion of state-mandated plans (ICAP, ECAP, IPS, etc.)

