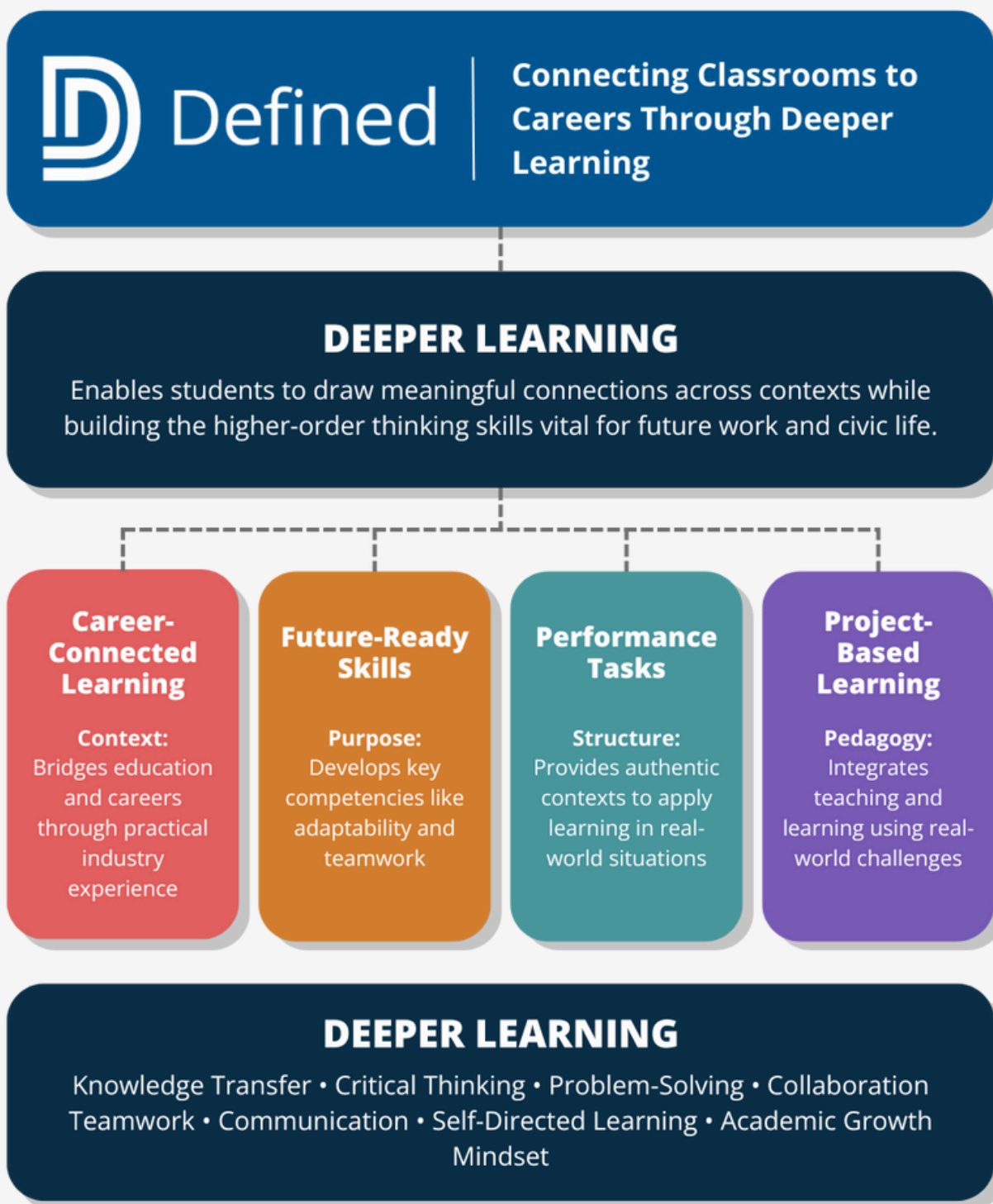


Career-Connected Deeper Learning Solutions

At Defined, our vision is to **transform learning environments** where **every student discovers their potential** through **authentic learning experiences** that **bridge education and future success**. The graphic below outlines our mission, vision, and the 4 pillars of Defined: **Career-Connected Learning, Future-Ready Skills, Performance Tasks, and Project-Based Learning**.



DEEPER LEARNING

Enables students to draw meaningful connections across contexts while building the higher-order thinking skills vital for future work and civic life.

Deeper Learning is the ability to understand complex topics, **apply and transfer knowledge** to new situations, and develop essential skills needed for success in an ever-changing, global environment.

Deeper Learning enables students to **draw meaningful connections** across contexts while building the higher-order thinking skills vital for future work and civic life.

Career-Connected Learning

Context:
Bridges education and careers through practical industry experience

- Connects classroom content and skills to real-world careers and industries
- Provides authentic career exploration and application through performance tasks
- Develops professional skills through minds-on and hands-on activities and experiences
- Enables students to "test drive" careers
- Builds career awareness, preparation, and readiness
- Provides pathways for internships and work-based learning

Future-Ready Skills

Purpose:
Develops key competencies like adaptability and teamwork

- Essential competencies for workplace and life success
- Includes collaboration, communication, creativity, and critical thinking
- Develops leadership and problem-solving abilities
- Builds adaptability for changing environments
- Promotes metacognition and self-management
- Cultivates growth mindset and professionalism

Performance Tasks

Structure:
Provides authentic contexts to apply learning in real-world situations

- Present authentic, real-world challenges
- Connect academic content and practices to careers
- Students must transfer their knowledge and skills to new and varied contexts
- Open-ended and typically do not yield a single, correct answer
- Performance tasks can integrate two or more subjects, as well as future ready skills
- Authentic contexts for performance and product development

Project-Based Learning

Pedagogy:
Integrates teaching and learning using real-world challenges

- Engages students in complex, real-world problems and projects
- Promotes inquiry-driven, hands-on learning
- Results in meaningful public products
- Requires collaboration and project management
- Builds student ownership of learning
- Contributes to intellectual challenge and accomplishment with authentic, real-world contexts
- Easily connects with Place-Based and Problem-Based issues and challenges

- **Knowledge Transfer**
- Critical thinking and problem-solving
- Collaboration and teamwork
- Effective communication
- Self-directed learning
- Academic growth mindset

DEEPER LEARNING

Knowledge Transfer • Critical Thinking • Problem-Solving • Collaboration
Teamwork • Communication • Self-Directed Learning • Academic Growth
Mindset

